



SNC-RS44N/SNC-RS44P
SNC-RS46N/SNC-RS46P
Indoor Model

SNC-RS84N/SNC-RS84P
SNC-RS86N/SNC-RS86P
Outdoor Model

Network Rapid Dome Cameras

SNC-RS Series

New Rapid Dome Cameras With High Visibility and Rich Features from Sony

Sony is pleased to introduce its new rapid dome cameras, the SNC-RS Series, supporting H.264, MPEG-4, and JPEG compression formats. With a powerful streaming capability of 30 fps in D1 resolution, combined with newly developed image-enhancement technologies, the SNC-RS Series dramatically enhances usability in a wide variety of lighting environments and applications. With a total range of 210° tilting and 360° endless high-speed pan capabilities, they can cover a wide monitoring area.

With a host of new features and excellent performance, the SNC-RS Series is the perfect choice, whatever your specific needs.

Connect Your Vision

IPELA™

FEATURES

Clear and Bright Images

Visibility Enhancer

The SNC-RS Series includes Visibility Enhancer technology. This tone-correction technology optimizes the visibility of a scene by increasing brightness in darker areas of the scene and compressing the brighter areas. The result is sharper, clearer images and a higher level of visibility – all of which are critical for security surveillance.



OFF



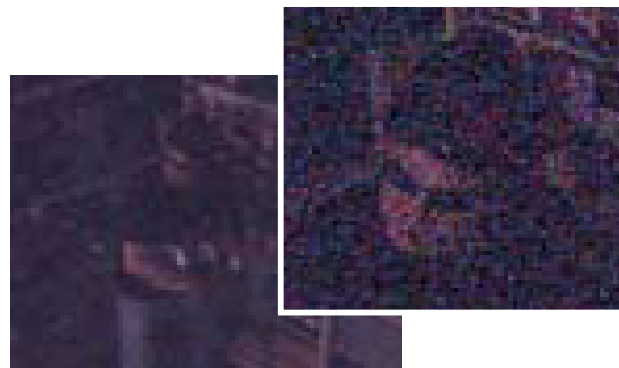
ON

(Actual images)

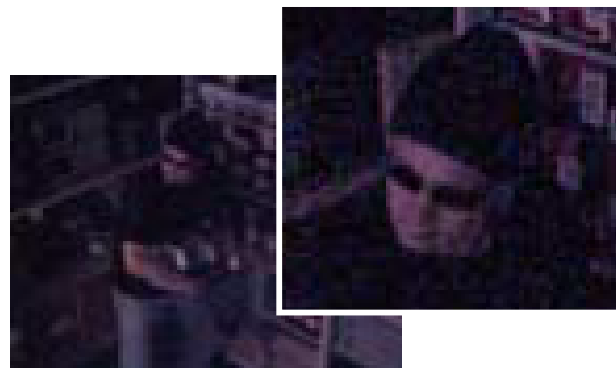
XDNR (eXcellent Dynamic Noise Reduction)

Incorporating newly developed XDNR technology, these cameras can provide clear images while at the same time minimizing motion blur under low illumination. What's more, when both XDNR and Visibility Enhancer are turned on, the cameras can achieve four times the sensitivity compared to when they are off.

This technology is ideal for any outdoor surveillance monitoring, such as in a car park at night.



OFF



ON

(Actual images)

Wide-D Technology

The SNC-RS Series incorporates Wide-D technology, which offers a wide dynamic range to handle various lighting conditions in a scene. Even in a scene with extremely bright and dark areas, or in backlight conditions, the SNC-RS Series provides clear visibility of all objects.



Normal Shutter Speed



High Shutter Speed



With Wide-D Technology

(Simulated images)

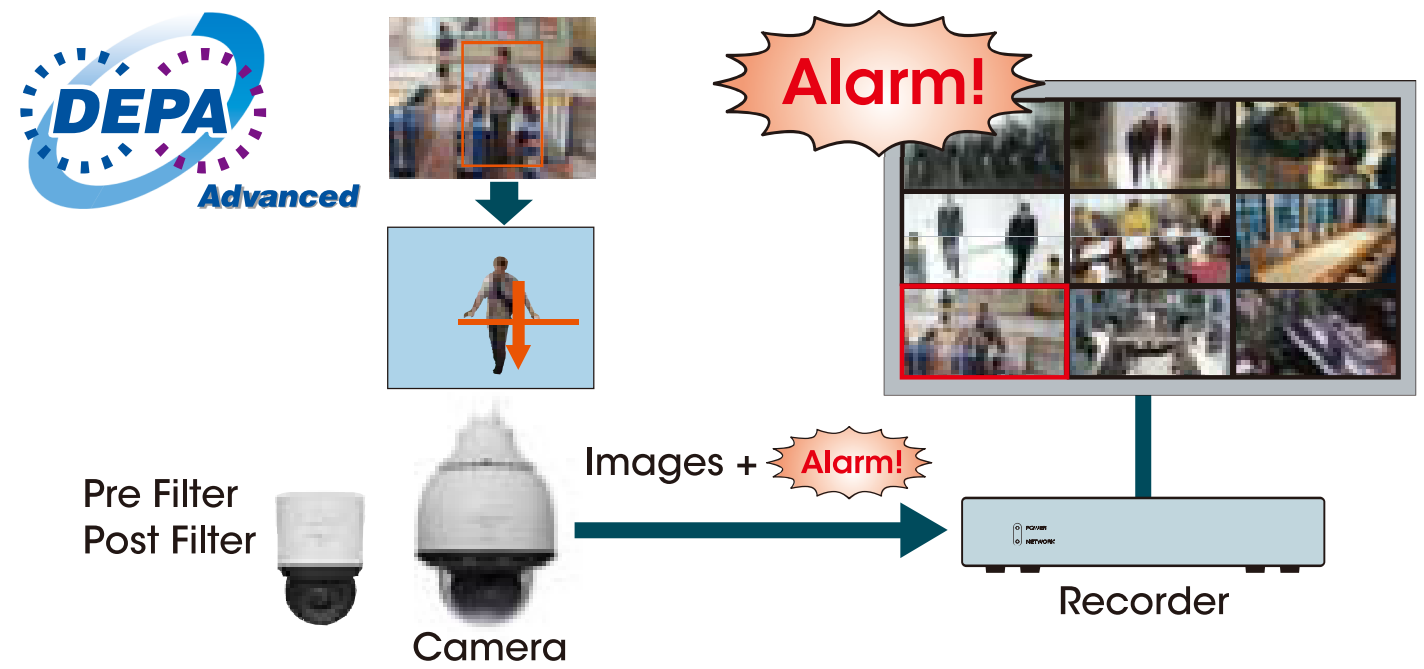
Powerful and Versatile Zoom Capability

The SNC-RS46/RS86 incorporates a powerful 36x optical zoom lens, while the SNC-RS44/RS84 incorporates a 18x optical zoom lens. Both also feature a 12x digital zoom capability, providing a total zoom ratio of 432x for the SNC-RS46/RS86 and 216x for the SNC-RS44/RS84.

Intelligence

DEPA Advanced — Intelligent Video and Audio Analytics

Incorporating DEPA Advanced technology, the SNC-RS Series offers intelligent video and audio analytics. With this feature, the camera can trigger an alarm based on user-defined rules. This allows users to further refine the criteria for triggering an alarm, making the overall system more efficient.



- **Intelligent Motion Detection**

With this feature, the cameras can detect irregular motion and trigger an alarm based on up to three user-defined rules, such as intrusion across a virtual border line or a beam intrusion detector*1.

- **Tamper Alarm**

When an attempt is made to tamper with the camera, such as spray-painting the lens, the SNC-RS Series detects this and triggers an alarm. This event can be used to activate the camera relays, or even to start the Voice Alert function.

- **Advanced Audio Detection***2

Unlike conventional audio detection where an alarm is triggered based on a preset audio level, the SNC-RS Series triggers its alarms based on ambient sound conditions as the threshold. The camera stores and updates ambient audio levels and frequencies. When the threshold level based on this data is surpassed, an alarm is triggered.

Audio Functions

Voice Alert

The camera can store up to three pre-recorded audio files. Upon initiation, either manually or via an alarm, the camera can play out one of the three pre-recorded audio files via a locally connected active speaker.

Ambient Sound Filter

The SNC-RS Series is capable of learning ambient sound and suppressing extraneous noise.

Dynamic Range Compressor

*2

To prevent audio clipping from occurring due to high audio levels, these cameras employ the dynamic range compressor, which dynamically controls the gain to maintain incoming audio at a proper level.

Echo Cancellation

The SNC-RS Series has an echo-cancellation capability. This feature cancels the echo that would otherwise occur between the operator site and the camera site, when loud speakers and microphones are used in the system.

System Flexibility

Three Codecs — H.264, MPEG-4, and JPEG Support

The SNC-RS Series supports three compression formats: H.264, MPEG-4, and JPEG. The industry-standard JPEG compression format is the best choice for high-quality still images. MPEG-4 provides clear moving images efficiently over networks when bandwidth is limited. H.264 provides twice the efficiency of MPEG-4, for when bandwidth is even more limited.

Triple Streaming Capability

With its triple streaming capability, the SNC-RS Series can stream any three formats from H.264, MPEG-4, and JPEG. simultaneously. This flexibility allows you to maximize your network and storage resources.

ONVIF Conformance (Open Network Video Interface Forum)



In line with Sony's commitment to open standards, the SNC-RS Series is conformance to ONVIF specifications. ONVIF defines a common protocol for the exchange of information between different network video devices regardless of manufacturer, and realizes greater interoperability in multi-vendor network video systems.

Support for IPv6

The SNC-RS Series supports Internet Protocol Version 6 (IPv6).

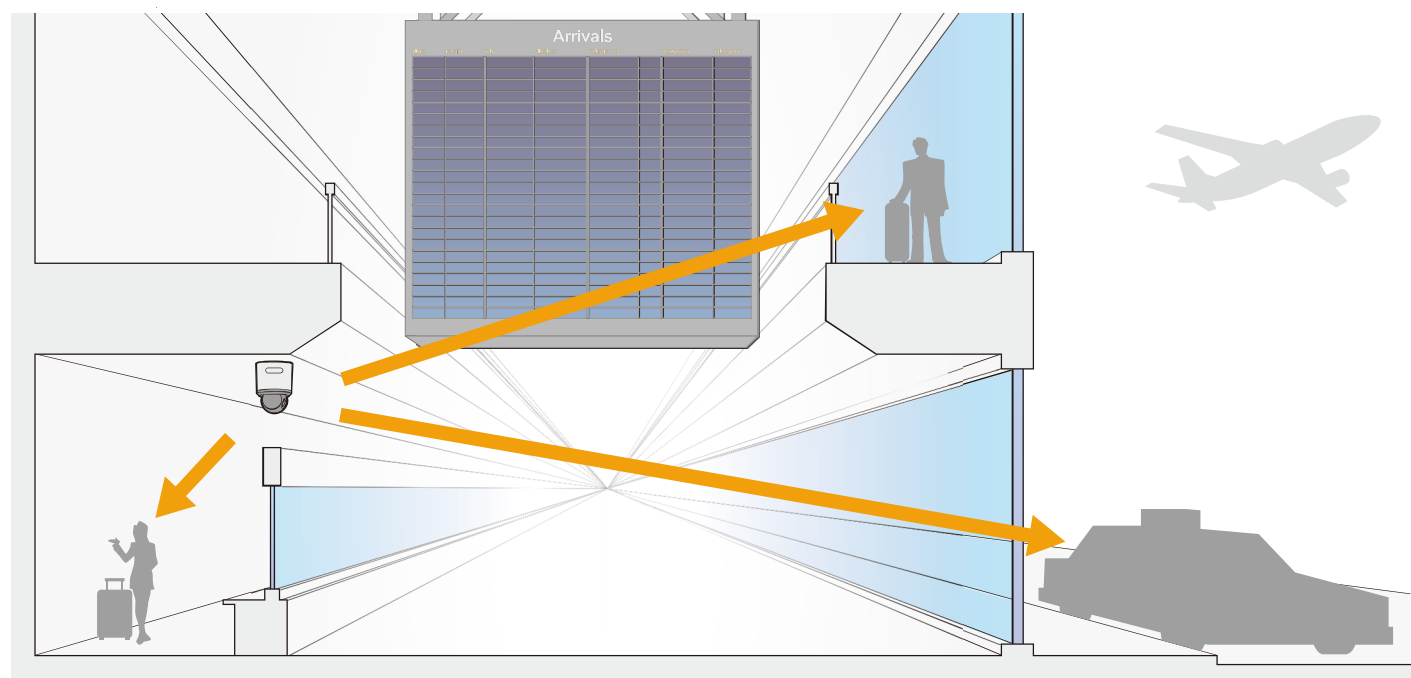
Advanced Rapid Dome Mechanism

Above-the-Horizon Tilt — 15° Tilt-up

The SNC-RS Series has a total tilt range of 210°. Thanks to this additional 15° tilt range compared to the normal horizon-only view, the SNC-RS Series is able to monitor elevated areas – which greatly expands its viewing range.

High-speed 360° Endless Panning

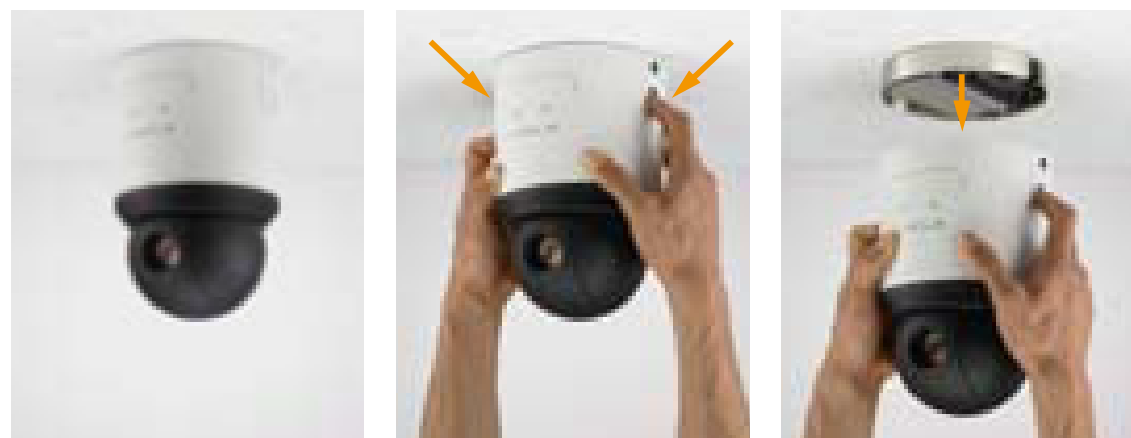
The SNC-RS Series has a high-speed 360° endless panning (or rotation) capability, as fast as 400° per second. This allows users to quickly and precisely capture almost any object within the field of view surrounding the camera.



Flexible and Easy Installation

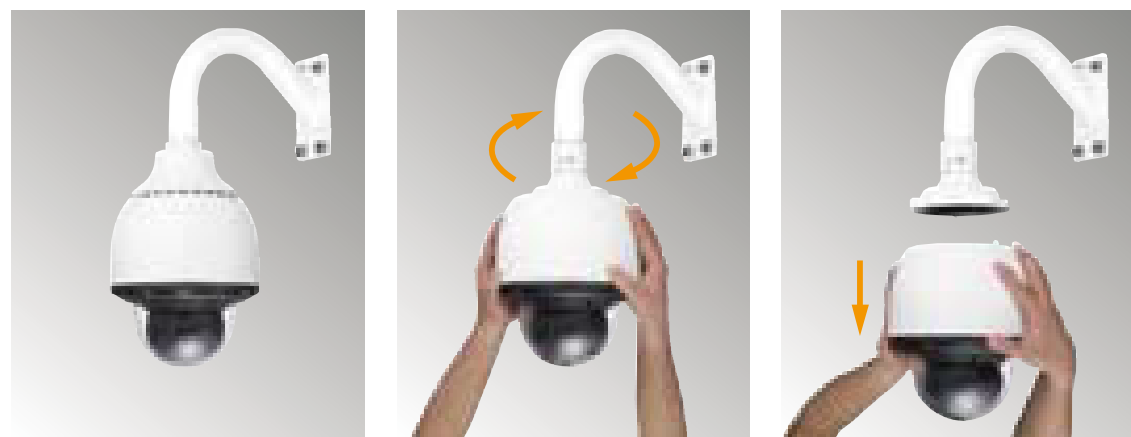
Quick-release Mechanism

The camera can be installed or detached quickly and easily thanks to its newly developed base, which greatly reduces installation and servicing time.



Indoor model

Press Release Button and pull



Outdoor model

Remove Top Sunshade, Rotate Main Unit and pull
(Need to remove locking screws)

hPoE Support*³ (Compliant With IEEE802.3)

Supporting high Power over Ethernet (hPoE), the SNC-RS44/RS46 can be powered using the same Ethernet cable it uses for data transfer. This feature greatly reduces the physical infrastructure costs and speed of deployment.

Local Storage / Wireless Capability

The SNC-RS Series has a Compact Flash (CF) slot. This can be used either with a CF memory card for local video storage, or for wireless capability. The SNCA-CFW5 (802.11b/g) CF type wireless LAN card is supported.

Designed for Heavy-duty Outdoor Monitoring (SNC-RS84/RS86)

IP66 Rating

The SNC-RS84/RS86 complies with the IP66 standard for protection against water and dust.

Impact-resistant — IK10 rating

Compliant with IK10 rating, the cameras are protected by an impact-resistant and scratch-proof polycarbonate dome cover.

Integrated Sunshade Ventilation Mechanism

For hot-weather outdoor applications, the camera has a special ventilation mechanism.

*1 Beam intrusion detector is available with version 1.1 or later

*2 Available with version 1.1 or later

*3 Available with version 1.2 or later

OPTIONAL ACCESSORIES

Indoor



YT-LD124C
Dome Cover Clear

Indoor



YT-LD124S
Dome Cover Smoked

Indoor



YT-ICB124
In-ceiling Bracket

Outdoor



SNCA-CW5
Outdoor Antenna Cable Kit

Indoor

Outdoor



SNCA-CFW5
Wireless LAN Card

Indoor

Outdoor



SNCA-AN1
Wireless LAN Antenna

Indoor

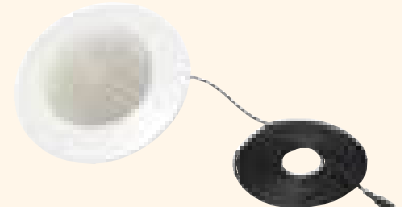
Outdoor



SCA-S30
Active Speaker

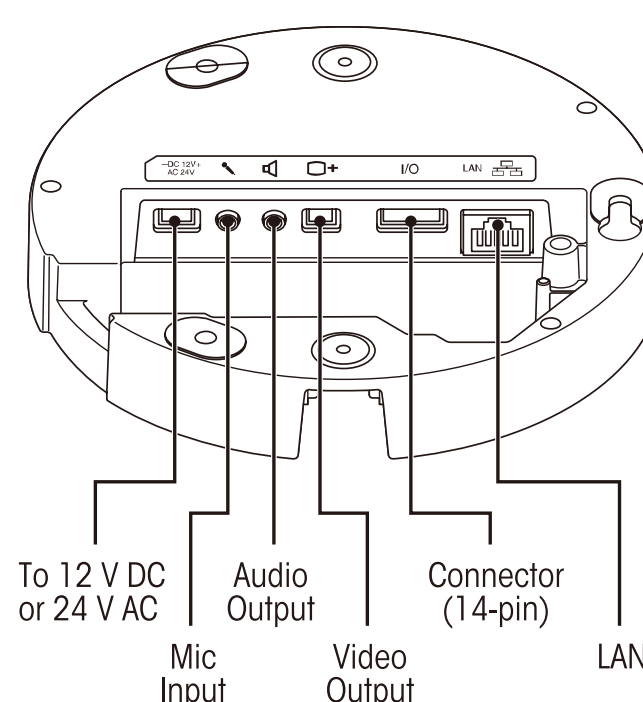
Indoor

Outdoor

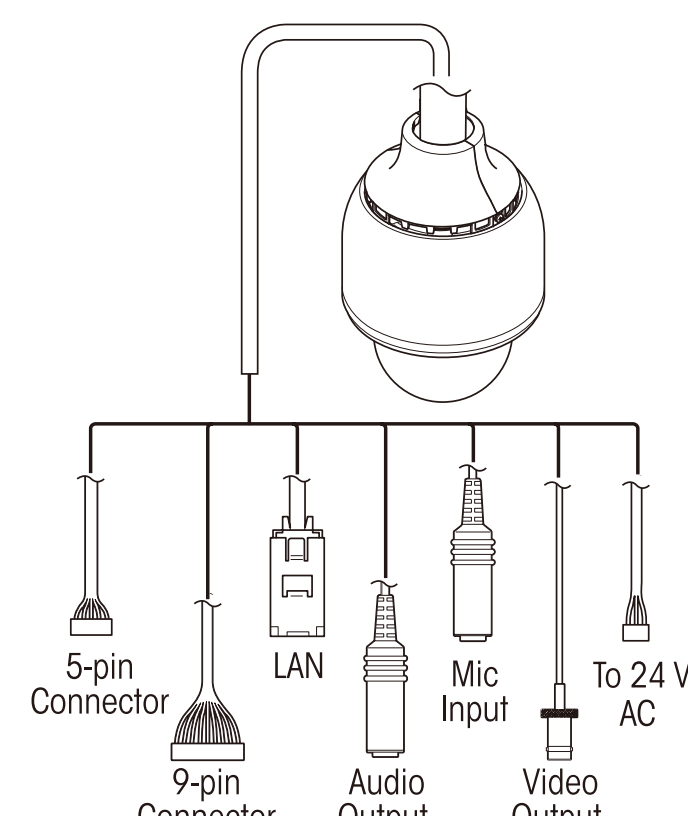


SCA-M30
Ceiling Microphone

CONNECTORS



SNC-RS44/RS46



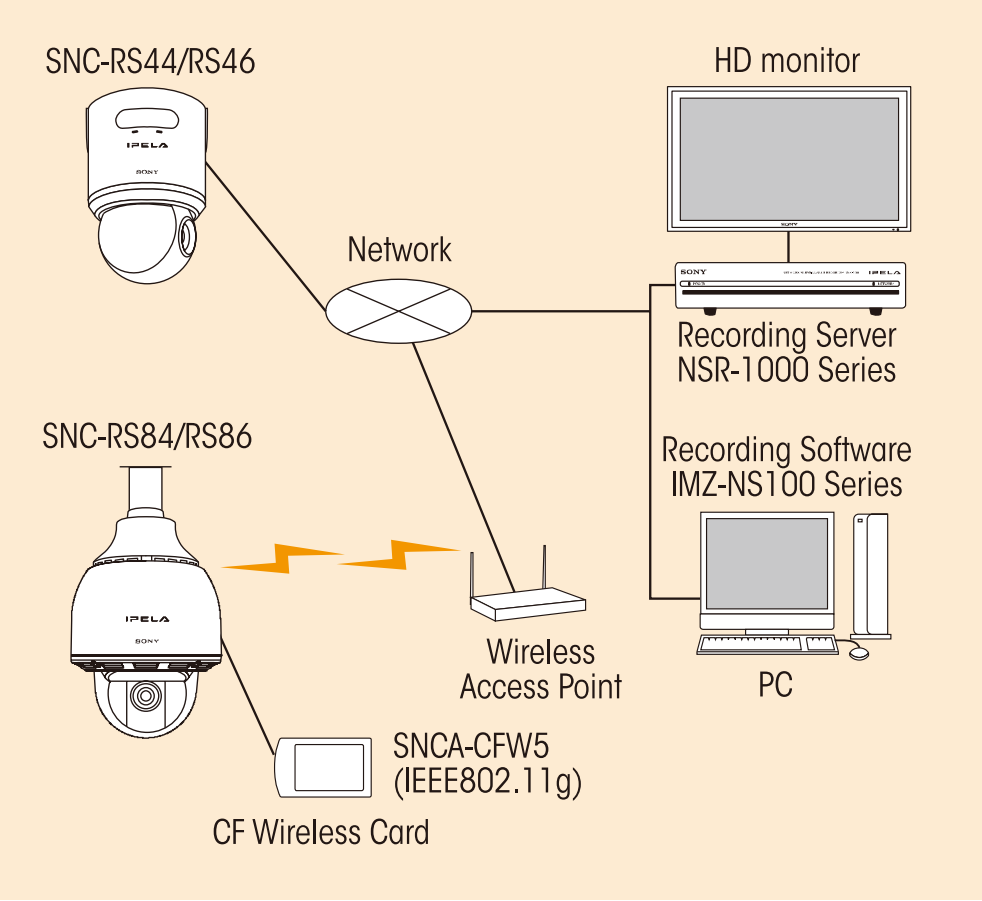
SNC-RS84/RS86

SPECIFICATIONS

	SNC-RS44N	SNC-RS44P	SNC-RS46N	SNC-RS46P	SNC-RS84N	SNC-RS84P	SNC-RS86N	SNC-RS86P
Camera								
Image device	1/4-type CCD with "Exwave" HAD technology							
Minimum illumination	Day : 0.4 lx (XDNR ON VE ON Slow Shutter OFF 50 IRE IP) 0.7 lx (Slow Shutter OFF 50 IRE Analog Video Output) Night : 0.08 lx (XDNR ON VE ON Slow Shutter OFF 50 IRE IP) 0.15 lx (Slow Shutter OFF 50 IRE Analog Video Output)		Day : 0.7 lx (XDNR ON VE ON Slow Shutter OFF 50 IRE IP) 1.4 lx (Slow Shutter OFF 50 IRE Analog Video Output) Night : 0.08 lx (XDNR ON VE ON Slow Shutter OFF 50 IRE IP) 0.15 lx (Slow Shutter OFF 50 IRE Analog Video Output)		Day : 0.4 lx (XDNR ON VE ON Slow Shutter OFF 50 IRE IP) 0.8 lx (Slow Shutter OFF 50 IRE Analog Video Output) Night : 0.09 lx (XDNR ON VE ON Slow Shutter OFF 50 IRE IP) 0.17 lx (Slow Shutter OFF 50 IRE Analog Video Output)		Day : 0.8 lx (XDNR ON VE ON Slow Shutter OFF 50 IRE IP) 1.6 lx (Slow Shutter OFF 50 IRE Analog Video Output) Night : 0.09 lx (XDNR ON VE ON Slow Shutter OFF 50 IRE IP) 0.17 lx (Slow Shutter OFF 50 IRE Analog Video Output)	
Number of effective pixels (H x V)	380,000 (768 x 494)	440,000 (752 x 582)	380,000 (768 x 494)	440,000 (752 x 582)	380,000 (768 x 494)	440,000 (752 x 582)	380,000 (768 x 494)	440,000 (752 x 582)
Electronic shutter speed	1 to 1/10,000 s							
Auto gain control	Auto/Manual (-3 to +28 dB)							
Exposure control	Auto, Full auto, Shutter-priority, Iris-priority, Manual, EV compensation, Backlight compensation							
White balance mode	Auto, Indoor, Outdoor, One-push WB, ATW, Manual							
Lens type	Auto-focus zoom lens							
Zoom ratio	18x		36x		18x		36x	
Horizontal viewing angle	2.8 to 48.0 degrees		1.7 to 57.8 degrees		2.8 to 48.0 degrees		1.7 to 57.8 degrees	
Focal length	f=4.1 to 73.8 mm		f=3.4 to 122.4 mm		f=4.1 to 73.8 mm		f=3.4 to 122.4 mm	
F-number	F1.4 (wide), F3.0 (tele)		F1.6 (wide), F4.5 (tele)		F1.4 (wide), F3.0 (tele)		F1.6 (wide), F4.5 (tele)	
Minimum object distance	290 mm (11 1/2 inches) to 800 mm (31 1/2 inches) (tele)		320 mm (12 5/8 inches) to 1500 mm (59 1/8 inches) (tele)		290 mm (11 1/2 inches) to 800 mm (31 1/2 inches) (tele)		320 mm (12 5/8 inches) to 1500 mm (59 1/8 inches) (tele)	
Pan angle	360 degrees endless rotation							
Pan speed	400 degrees/s (max.)							
Tilt angle	210 degrees (with e-flip)							
Tilt speed	400 degrees/s (max.)							
Preset position	256 position							
Tour	5 preset tours*, 4 shadow tours *16 presets per one preset tour							
Camera Features								
Day/Night *1	Yes							
Wide-D	Yes							
Image enhancement	Visibility Enhancer							
Noise reduction	XDNR							
Image								
Codec image size (H x V)	720 x 480, 640 x 480 (VGA), 384 x 288, 320 x 240 (QVGA)	720 x 576, 640 x 480 (VGA), 384 x 288, 320 x 240 (QVGA)	720 x 480, 640 x 480 (VGA), 384 x 288, 320 x 240 (QVGA)	720 x 576, 640 x 480 (VGA), 384 x 288, 320 x 240 (QVGA)	720 x 480, 640 x 480 (VGA), 384 x 288, 320 x 240 (QVGA)	720 x 576, 640 x 480 (VGA), 384 x 288, 320 x 240 (QVGA)	720 x 480, 640 x 480 (VGA), 384 x 288, 320 x 240 (QVGA)	720 x 576, 640 x 480 (VGA), 384 x 288, 320 x 240 (QVGA)
Video compression format	H.264, MPEG-4, JPEG							
Maximum frame rate	H.264/MPEG-4/JPEG: 30 fps (720 x 480)	H.264/MPEG-4/JPEG: 25 fps (720 x 576)	H.264/MPEG-4/JPEG: 30 fps (720 x 480)	H.264/MPEG-4/JPEG: 25 fps (720 x 576)	H.264/MPEG-4/JPEG: 30 fps (720 x 480)	H.264/MPEG-4/JPEG: 25 fps (720 x 576)	H.264/MPEG-4/JPEG: 30 fps (720 x 480)	H.264/MPEG-4/JPEG: 25 fps (720 x 576)
Audio								
Audio compression	G.711/G.726							
Scene Analytics								
Intelligent motion detection	Yes (with built-in Post Filter)							
Intelligent object detection	No							
Advanced audio detection	Yes*2							
Network								
Protocols	IPv4, IPv6, TCP, UDP, ARP, ICMP, IGMP, HTTP, HTTPS, FTP (client/server), SMTP, DHCP, DNS, NTP, RTP/RTCP, RTSP, SNMP (MIB-2)							
ONVIF conformance	Yes							
Wireless network	Yes (with option)*3							
Number of clients	10							
Authentication	IEEE802.1X							
Analog Video Output								
Signal system	NTSC	PAL	NTSC	PAL	NTSC	PAL	NTSC	PAL
Horizontal resolution	530 TVL							
S/N ratio	More than 50 dB							
Interface								
Ethernet	10BASE-T/100BASE-TX (RJ-45)							
Serial interface	RS-232C, RS-422/RS-485 (PELCO D protocol)							
Card slots	CF card x1							
Analog video output	Composite video (1Vp-p)							
Sensor input	x 4							
Alarm output	x 2							
External microphone input	Mini-jack (Monaural), MIC IN/LINE IN: 2.2 k ohm, 2.45 V DC plug-in power							
Audio line output	Mini-jack (Monaural), Max output level: 1 Vrms							
General								
Mass	2.0 kg (4 lb 6 oz)				4.3 kg (9 lb 8 oz)			
Dimensions (ø x H)	154 x 226 mm (6 1/8 x 9 inches)				238 x 344 mm (9 3/8 x 13 5/8 inches)			
Power requirements	hPoE**, AC 24 V, DC 12 V				AC 24 V			
Power consumption	23 W max.				78 W max			
Operating temperature	0 to 50 °C (32 to 122 °F)				-40 to 50 °C (-40 to 122 °F)			
Storage temperature	-20 to +60 °C (-4 to 140 °F)							
Ingress protection rating	-				IP66			
Impact resistance rating	-				IK10			
System Requirements								
Operating system	Windows XP, Windows Vista							
Processor	CPU: Pentium4 3 GHz, Intel Core2 Duo 2 GHz or higher							
Memory	1 GB or more							
Web browser	Microsoft Internet Explorer Ver6.0 or, Ver7.0							
Supplied Accessories								
Base unit, Mounting bracket, Screws, Cables (Power input, BNC, I/O, Serial), Installation manual, CD-ROM (User's guide, SNC toolbox), Mounting template, Wire rope					Top sunshade, Rotate-and-lock coupling, Waterproof covers, Bolts, Installation manual, CD-ROM (User's guide, SNC toolbox), Wire fixing belt, Cables			

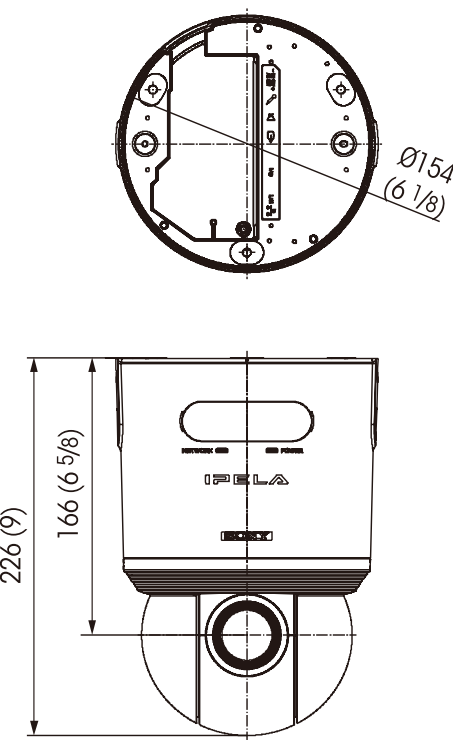
*1 Removable IR Cut Filter *2 Available with software version 1.1 or later *3 With optional SNCA-CFW5 *4 Available with software version 1.2 or later

SYSTEM CONFIGURATIONS

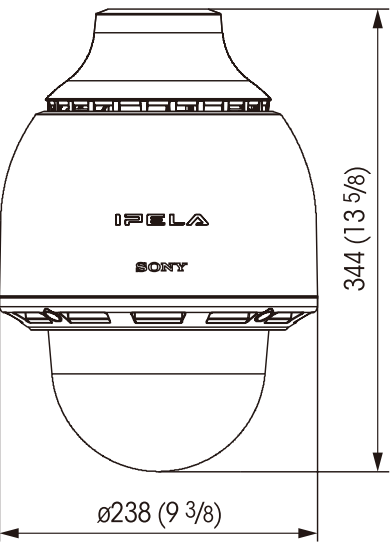


DIMENSIONS

SNC-RS44/RS46



SNC-RS84/RS86



Unit: mm (inches)

CONFIGURATION

SNC-RS84/RS86



Install in indicated numerical order

*This product includes software developed by the OpenSSL Project for use in the OpenSSL Toolkit. (<http://www.openssl.org/>)

Distributed by


www.use-ip.co.uk
01304 827609

© 2010 Sony Corporation. All rights reserved.
Reproduction in whole or in part without written permission is prohibited.
Features and specifications are as of version 1.2 or later and subject to change without notice.
All non-metric weights and measurements are approximate.
Sony is a registered trademark of Sony Corporation.
IPELA and DEPA are trademarks of Sony Corporation.
All other trademarks are the property of their respective owners.