

AXIS Camera Station S20 Appliance Series

AXIS Camera Station S2008 Appliance

AXIS Camera Station S2016 Appliance

AXIS Camera Station S2024 Appliance

Installation Guide

Legal Considerations

Video and audio surveillance can be regulated by laws that vary from country to country. Check the laws in your local region before using this product for surveillance purposes.

Liability

Every care has been taken in the preparation of this document. Please inform your local Axis office of any inaccuracies or omissions. Axis Communications AB cannot be held responsible for any technical or typographical errors and reserves the right to make changes to the product and manuals without prior notice. Axis Communications AB makes no warranty of any kind with regard to the material contained within this document, including, but not limited to, the implied warranties of merchantability and fitness for a particular purpose. Axis Communications AB shall not be liable nor responsible for incidental or consequential damages in connection with the furnishing, performance or use of this material. This product is only to be used for its intended purpose.

Intellectual Property Rights

Axis AB has intellectual property rights relating to technology embodied in the product described in this document. In particular, and without limitation, these intellectual property rights may include one or more of the patents listed at www.axis.com/patent.htm and one or more additional patents or pending patent applications in the US and other countries.

This product contains source code copyright Apple Computer, Inc., under the terms of Apple Public Source License 2.0 (see www.opensource.apple.com/aps/). The source code is available from <https://developer.apple.com/bonjour/>

Equipment Modifications

This equipment must be installed and used in strict accordance with the instructions given in the user documentation. This equipment contains no user-serviceable components. Unauthorized equipment changes or modifications will invalidate all applicable regulatory certifications and approvals.


Copyright and Trademark Acknowledgments

©2015 Axis Communications AB, © 2014 Dell Inc. All rights reserved. This product is protected by U.S. and international copyright and intellectual property laws. AXIS COMMUNICATIONS, AXIS, ETRAX, ARTPEC and VAPIX are registered trademarks or trademark applications of Axis AB in various jurisdictions. All other company names and products are trademarks or registered trademarks of their respective companies. We reserve the right to introduce modifications without notice.

Dell™ is a trademark of Dell Inc. Ethernet, Internet Explorer, WWW are registered trademarks of the respective holders. Microsoft®, Windows®, MS-DOS®, Windows Vista®, the Windows Vista start button, and Office Outlook® are either trademarks or registered trademarks of Microsoft Corporation in the United States and/or other countries. Java and all Java-based trademarks and logos are trademarks or registered trademarks of Oracle and/or its affiliates.

Regulatory Information

Europe

 This product complies with the applicable CE marking directives and harmonized standards:

- Electromagnetic Compatibility (EMC) Directive 2014/30/EU. See *Electromagnetic Compatibility (EMC)* on page 2.
 - Low Voltage (LVD) Directive 2014/35/EU. See *Safety* on page 3.
 - Restrictions of Hazardous Substances (RoHS) Directive 2011/65/EU. See *Disposal and Recycling* on page 3.
- A copy of the original declaration of conformity may be obtained from Axis Communications AB. See *Contact Information* on page 3.

Electromagnetic Compatibility (EMC)

This equipment has been designed and tested to fulfill applicable standards for:

- Radio frequency emission when installed according to the instructions and used in its intended environment.
- Immunity to electrical and electromagnetic phenomena when installed according to the instructions and used in its intended environment.

USA

This equipment has been tested using a shielded network cable (STP) and found to comply with the limits for a Class A digital device, pursuant to part 15 of the FCC Rules. These limits are designed to provide reasonable protection against harmful interference when the equipment is operated in a commercial environment. This equipment generates, uses, and can radiate radio frequency energy and, if not installed and used in accordance with the instruction manual, may cause harmful interference to radio communications. Operation of this equipment in a residential area is likely to cause harmful interference in which case the user will be required to correct the interference at his own expense. The product shall be connected using a shielded network cable (STP) that is properly grounded.

Canada

This digital apparatus complies with CAN ICES-3 (Class A). The product shall be connected using a shielded network cable (STP) that is properly grounded. Cet appareil numérique est conforme à la norme NMB ICES-3 (classe A). Le produit doit être connecté à l'aide d'un câble réseau blindé (STP) qui est correctement mis à la terre.

Europe

This digital equipment fulfills the requirements for RF emission according to the Class A limit of EN 55022. The product shall be connected using a shielded network cable (STP) that is properly grounded. Notice! This is a Class A product. In a domestic environment this product may cause RF interference, in which case the user may be required to take adequate measures.

This product fulfills the requirements for immunity according to EN 55024 office and commercial environments.

Australia/New Zealand

This digital equipment fulfills the requirements for RF emission according to the Class A limit of AS/NZS CISPR 22. The product shall be connected using a shielded network cable (STP) that is properly grounded. Notice! This is a Class A product. In a domestic environment this product may cause RF interference, in which case the user may be required to take adequate measures.

Japan

この装置は、クラスA 情報技術装置です。この装置を家庭環境で使用すると電波妨害を引き起こすことがあります。この場合には使用者が適切な対策を講ずるよう要求されることがあります。本製品は、シールドネットワークケーブル(STP)を

使用して接続してください。また適切に接地してください。

Safety

This product complies with IEC/EN 60950-1, Safety of Information Technology Equipment. If its connecting cables are routed outdoors, the product shall be grounded either through a shielded network cable (STP) or other appropriate method.

Disposal and Recycling

When this product has reached the end of its useful life, dispose of it according to local laws and regulations. For information about your nearest designated collection point, contact your local authority responsible for waste disposal. In accordance with local legislation, penalties may be applicable for incorrect disposal of this waste.

Europe



■ This symbol means that the product shall not be disposed of together with household or commercial waste. Directive 2012/19/EU on waste electrical and electronic equipment (WEEE) is applicable in the European Union member states. To prevent potential harm to human health and the environment, the product must be disposed of in an approved and environmentally safe recycling process. For information about your nearest designated collection point, contact your local authority responsible for waste disposal. Businesses should contact the product supplier for information about how to dispose of this product correctly.

This product complies with the requirements of Directive 2011/65/EU on the restriction of the use of certain hazardous substances in electrical and electronic equipment (RoHS).

Contact Information

Axis Communications AB
Emdalavägen 14
223 69 Lund
Sweden

Tel: +46 46 272 18 00

Fax: +46 46 13 61 30

www.axis.com

Warranty Information

For information about Axis' product warranty and thereto related information, see www.axis.com/warranty/

Support

Should you require any technical assistance, please contact your Axis reseller. If your questions cannot be answered immediately, your reseller will forward your queries through the appropriate channels to ensure a rapid response. If you are connected to the Internet, you can:

- download user documentation and software updates
- find answers to resolved problems in the FAQ database. Search by product, category, or phrase
- report problems to Axis support staff by logging in to your private support area
- chat with Axis support staff
- visit Axis Support at www.axis.com/techsup/

Learn More!

Visit Axis learning center www.axis.com/academy/ for useful trainings, webinars, tutorials and guides.

Safety Information

Read through this Installation Guide carefully before installing the product. Keep the Installation Guide for future reference.

Hazard Levels

⚠DANGER

Indicates a hazardous situation which, if not avoided, will result in death or serious injury.

⚠WARNING

Indicates a hazardous situation which, if not avoided, could result in death or serious injury.

⚠CAUTION

Indicates a hazardous situation which, if not avoided, could result in minor or moderate injury.

NOTICE

Indicates a situation which, if not avoided, could result in damage to property.

Other Message Levels

Important

Indicates significant information which is essential for the product to function correctly.

Note

Indicates useful information which helps in getting the most out of the product.

AXIS Camera Station S20 Appliance Series

Safety Instructions

⚠WARNING

- The Axis product shall be installed by a trained professional.

⚠CAUTION

- Be careful of sharp metal edges. Use cut-resistant gloves during installation.

NOTICE

- The Axis product shall be used in compliance with local laws and regulations.
- Store the Axis product in a dry and ventilated environment.
- Avoid exposing the Axis product to shocks or heavy pressure.
- Avoid exposing the Axis product to vibration.
- Use only applicable tools when installing the Axis product. Using excessive force with power tools could cause damage to the product.
- Do not use chemicals, caustic agents, or aerosol cleaners.
- Use a clean cloth dampened with pure water for cleaning.
- Use only accessories that comply with the technical specification of the product. These can be provided by Axis or a third party.
- Use only spare parts provided by or recommended by Axis.
- Do not attempt to repair the product yourself. Contact Axis support or your Axis reseller for service matters.

NOTICE

- When transporting the Axis product, use the original packaging or equivalent to prevent damage to the product.

The Axis product uses a 3.0 V CR2032 lithium battery as the power supply for its internal real-time clock (RTC). Under normal conditions this battery will last for a minimum of five years.

The battery should not be replaced unless required, but if the battery does need replacing, contact Axis support at www.axis.com/techsup for assistance.

Lithium coin cell 3.0 V batteries contain 1,2-dimethoxyethane; ethylene glycol dimethyl ether (EGDME), CAS no. 110-71-4.

⚠WARNING

- Risk of explosion if the battery is incorrectly replaced.
- Replace only with an identical battery or a battery which is recommended by Axis.
- Dispose of used batteries according to local regulations or the battery manufacturer's instructions.

AXIS Camera Station S20 Appliance Series

Installation Guide

This Installation Guide provides instructions for installing AXIS S2008, AXIS S2016 and AXIS S2024. For other aspects of using the product, go to www.axis.com

Installation Steps

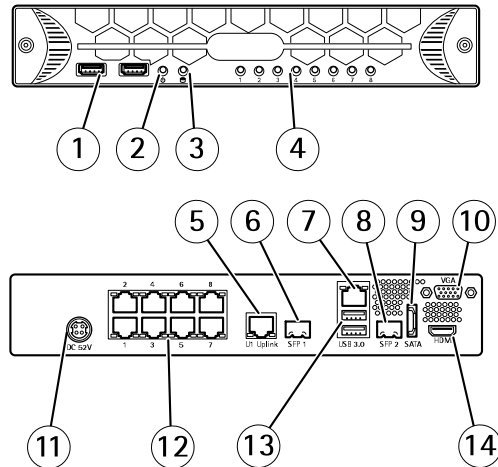
1. Make sure the package contents, tools and other materials necessary for the installation are in order. See *page 8*.
2. Study the hardware overview. See *page 9*.
3. Connect the cables. See *page 12*.
4. Setup software. See *page 13*.
5. Network configuration. See *page 13*.
6. Get Started. See *page 13*.

Package Contents

- AXIS Camera Station S2008 Appliance or
AXIS Camera Station S2016 Appliance or
AXIS Camera Station S2024 Appliance
- External Power supply with cable (AXIS S2008)
- Power cable (AXIS S2016 / AXIS S2024)
- Mounting brackets (AXIS S2008)
- Rack mounting brackets (AXIS S2016 / AXIS S2024)
- Installation Guide (this document)

Hardware Overview

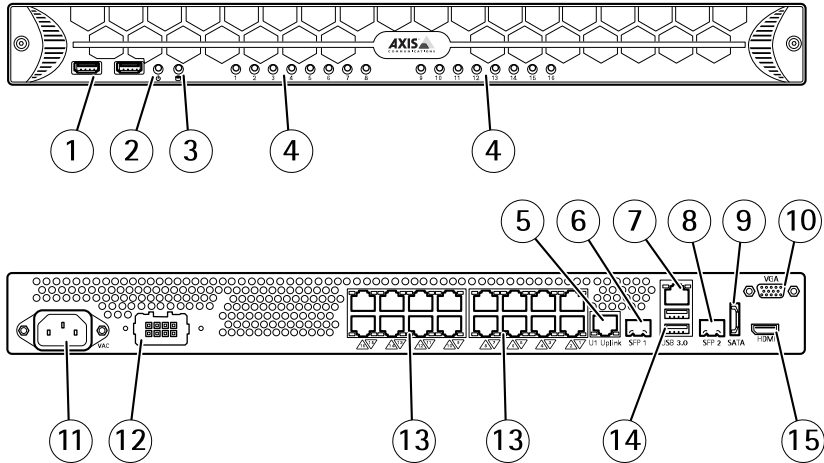
Front and Back Panel AXIS S2008



- 1 USB 2.0 connector x2
- 2 System power LED
- 3 Disk activity LED
- 4 Status LEDs, PoE port 1–8
- 5 U1 switch uplink, RJ45 connector
- 6 SFP 1 switch uplink, SFP connector
- 7 U2 server network, RJ45 connector
- 8 SFP 2 server network, SFP connector
- 9 eSATA connector
- 10 VGA monitor connector
- 11 DC power input connector
- 12 PoE enabled network connectors, port 1–8
- 13 USB 3.0 connector x2
- 14 HDMI monitor connector (audio output supported)

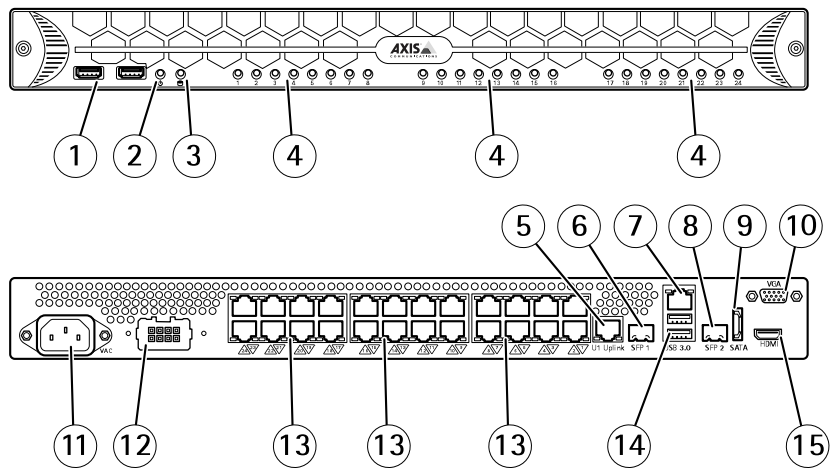
AXIS Camera Station S20 Appliance Series

Front and Back Panel AXIS S2016



- 1 USB 2.0 connector x2
- 2 System power LED
- 3 Disk activity LED
- 4 Status LEDs, PoE port 1–16
- 5 U1 switch uplink, RJ45 connector
- 6 SFP 1 switch uplink, SFP connector
- 7 U2 server network, RJ45 connector
- 8 SFP 2 server network, SFP connector
- 9 eSATA connector
- 10 VGA monitor connector
- 11 Mains power connector
- 12 Not used
- 13 PoE enabled network connectors, port 1–16
- 14 USB 3.0 connector x2
- 15 HDMI monitor connector (audio output supported)

Front and Back Panel AXIS S2024



- 1 USB 2.0 connector x2
- 2 System power LED
- 3 Disk activity LED
- 4 Status LEDs, PoE port 1–24
- 5 U1 switch uplink, RJ45 connector
- 6 SFP 1 switch uplink, SFP connector
- 7 U2 server network, RJ45 connector
- 8 SFP 2 server network, SFP connector
- 9 eSATA connector
- 10 VGA monitor connector
- 11 Mains power connector
- 12 Not used
- 13 PoE enabled network connectors, port 1–24
- 14 USB 3.0 connector x2
- 15 HDMI monitor connector (audio output supported)

LED Indicators

LED indicator	Color	Indication
System Power LED	Steady green	On

AXIS Camera Station S20 Appliance Series

Disk activity	Flashing yellow	Read/write
PoE ports	Steady red	Port connected

Unpack and Install the appliance

Unpack your system and identify each item, see *Package Contents on page 8*.

AXIS S2008 – Assemble the brackets and install the Axis appliance on a wall or on a flat surface following the safety instructions.

1. Align the two wall mount brackets with the two mounting screws on the side of the product. The brackets come with four screws that replace the two existing screws on each side of the unit.
2. Remove, replace, and tighten the screws and mount the unit on the wall or similar structure.

AXIS S2016/S2024 – Assemble the ear mounts and install the Axis appliance in the rack following the safety instructions. **AXIS S2016/AXIS S2024** have three mounting options that use two rack ear mounts.

The ear mounts can be fastened on either the front, center or rear section of both sides, depending on your rack solution.

1. Identify and remove which screws to replace by aligning the ear mounts on to the correct side section.
2. Align the ear mounts and use the replacement screws to tighten the rack ear mounts to each side.
3. Once both sides of the unit have the ear mounts firmly attached using the screws provided in the kit, the unit may be secured to the rack using the rack's four standard rack mount screws (two on each side).

Important

Place the server in a well ventilated location.

Important

Make sure not to cover the server's vent areas.

Connect the Cables

Important

Before you begin any of the procedures in this section, read the safety information in this document. For additional information, see www.axis.com

1. Connect the keyboard, mouse and monitor. Be sure to tighten the screws (if any) on the monitor's cable connector.
2. Connect the cameras to the PoE enabled network connectors.
3. If required, connect the LAN to the U2 server network RJ45 connector or SFP 2 server network SFP connector.
4. Connect the monitor's power cable and the system's power cable.

Set Up Software

When the computer has been powered on, the Windows operating system will start. Follow the instructions displayed on the screen and provide the required information. When the Windows installation is configured, **Get Started Application** will start automatically. Follow the steps on the screen.

Network Configuration

AXIS Camera Station can record and play back video from cameras and video encoders that are connected to a LAN (Local Area Network) or to a WAN (Wide Area Network). Depending on the installation, follow the instructions under Network & Security Configuration in **AXIS Camera Station User Manual** available at www.axis.com

Get Started with AXIS Camera Station

Start AXIS Camera Station Client and the wizard "**Get Started with AXIS Camera Station**" starts automatically. "**Get Started with AXIS Camera Station**" provides a quick way to add cameras and to configure and enable recording:

1. Register your pre-installed licenses
2. Select cameras and video encoders to add.
3. Select recording methods and where to store recordings.
4. Review settings and click **Finish** to add cameras.
5. Start recording and viewing with AXIS Camera Station.

For more information, see the built-in help and **AXIS Camera Station User Manual** available at www.axis.com

Access the Built-in PoE Switch

From the desktop, open the **Get Started Application** and goto the **Information & Support** tab. Log in with user name **admin** and password **system**.

It is recommended to change the password the first time you access the switch.

AXIS Camera Station S20 Appliance Series

Specification

Power

	AXIS S2008	AXIS S2016 / AXIS 2024
Wattage	Max 280 W, with external power supply. 140 W PoE dedicated	Max 500 W, 100 V AC to 240 V AC 277 W PoE dedicated
Voltage	100 V AC to 240 V AC, 50/60 Hz (with external Power supply)	100 V AC to 240 V AC, 50/60 Hz
Coin-cell battery	3 V CR2032 lithium coin cell	3 V CR2032 lithium coin cell

Physical

	AXIS S2008	AXIS S2016 / AXIS 2024
Height	44 mm (1.75 in)	44 mm (1.75 in)
Width	325 mm (12.8 in)	438 mm (17.2 inch)
Depth	238 mm (9.4 inch)	538 mm (21.2 inch)
Weight	3.5 kg (7.7 lbs)	10 kg (22 lb)

Environmental

Temperature

	AXIS S2008 / AXIS S2016 / AXIS 2024
Operating	0 °C to 40 °C (32 °F to 104 °F)
Storage	-40 °C to 65 °C (-40 °F to 149°F)

Relative humidity

	AXIS S2008 / AXIS S2016 / AXIS 2024
Operating	10% to 90% (noncondensing)
Storage	5% to 95% (noncondensing)

Further information

- For the latest version of this document, see www.axis.com
- To check if there is updated firmware available for your product, see www.axis.com/support
- For useful online trainings and webinars, see www.axis.com/academy

Warranty Information

For information about Axis' product warranty and thereto related information, see www.axis.com/warranty/

